

Connecting Research, Education and Innovation to the Underground

EUL

EUROPEAN
UNDERGROUND
LABORATORIES

Introduction

The EUL association

EUL is a non-profit oriented association with the goal to promote and advance science and interdisciplinary scientific research by forming a network of ULs and users to connect and support them as members of the association.



The EUL Association

Benefits of the Association

- The EUL as an umbrella organization for independent ULs (and networks)
- Promote the capabilities for innovation of ULs to policy makers
- Strong network for international funding calls
- Joint activities in UL development
- Outreach



Why the underground?

- Underground Laboratories (ULs) are already key test beds for mining, tunneling, underground construction, tool development thanks to their unique and advantageous features
- ULs can address more major questions of importance for humans
- ULs can be transformed into business sites where testing and production is possible
- Realistic operation conditions
- Stable environmental conditions
- Sealed from the environment with restricted access



Why the underground?

- Training and Education
- Reseach & Development
- Cultural Heritage & Tourism
- Energy Utilization
- Data Center / Storage
- Farming Underground
- Living Underground



The EUL

Possibilities

The Underground Laboratories of the BSUIN project give witness on the possibilities given for underground research, education and innovation.



Underground Laboratories

The Customers perspective

— **“I experienced solution-oriented support at the underground laboratory.”**

Rüdiger Giese, GFZ Potsdam on the Reiche Zeche, Germany

— **“This is a fascinating setting to study geochemical processes.”**

Mats Åström is a professor at Linnaeus University in Sweden on the Äspö HRL, Sweden

— **“If a project needs a protected, stable environment, the Callio Lab is the perfect place.”**

Marko Holma is CEO of Muon Solutions Oy on the Callio Lab, Finland



The EUL organization

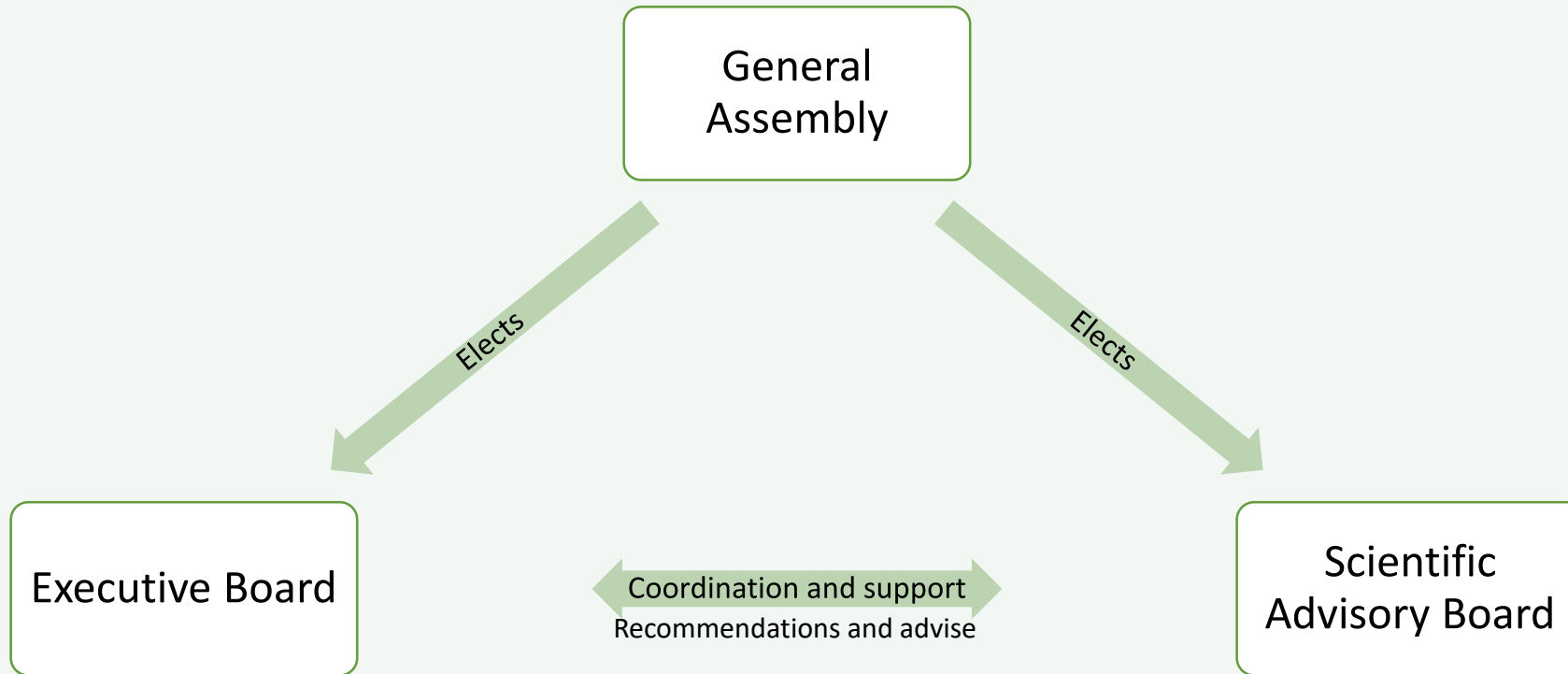
Who can be a member?

— All organizations and private persons that support the goals of the association



The members:

Form the bodies of the association and govern themselves



How to join?

Contact Data & Information

www.bsuin.eu

Toni Müller

TU Bergakademie Freiberg

Institute of Mining and Special Civil Engineering

Fuchsmühlenweg 9

09599 Freiberg

Germany

+49 (0)3731 392943

Toni.Mueller@mabb.tu-freiberg.de

EUL

EUROPEAN
UNDERGROUND
LABORATORIES

Thank You!

EUL

EUROPEAN
UNDERGROUND
LABORATORIES